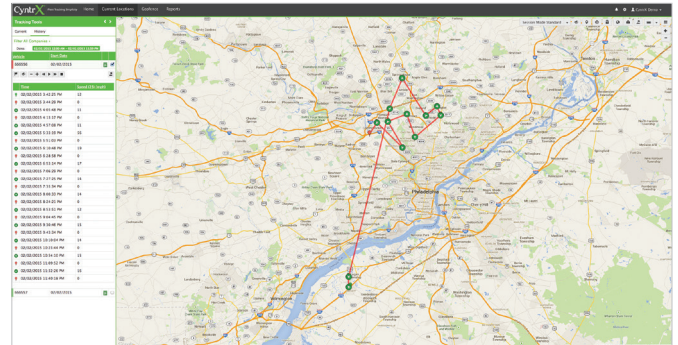


# we're driven

## CyntrX<sup>®</sup> Unit 3 Key Features and Benefits

Since 2004, CyntrX<sup>®</sup> has been delivering the most intuitive, simple, and easy-to-use fleet tracking solutions. Whether you are looking for a basic GPS system to locate your trucks or an integrated system that automates compliance and tax issues, the CyntrX<sup>®</sup> Fleet Tracking family of products can deliver the data you are looking for.



- Minimize out-of-route miles
- Pay accurate overtime
- Improve fuel efficiency
- Reduce private use and unauthorized stops
- Increase fleet and workforce security



- Enjoy nationwide tracking, plus Canada and Mexico
- Watch constant updates on truck's location, speed, and heading
- Locate truck at any time



- See truck's mpg and other key related performance metrics
- Get engine fault codes, helping prevent extensive and expensive repairs



- See automatic reports on leaving, arriving, traveling, and speeding events
- Create and monitor geofencing
- Use an Internet-based system with intuitive navigation
- View street-level, Google-based maps
- Rest easy with no software to buy or upgrade



**No contracts!**



**5-year warranty!**



Discover more or  
**get a quote today!**



Call CyntrX<sup>®</sup> at  
**866-634-6348**

	Unit 2	Unit 3	Unit 3 Plus Fuel Tax*	Unit 3 Plus Electronic Logs*
<b>Location Reporting</b>				
Street Address	■	■	■	■
Latitude & longitude	■	■	■	■
Speed & heading	■	■	■	■
Odometer reading	■	■	■	■
<b>Mapping</b>				
Current location mapping	■	■	■	■
Historical breadcrumb mapping	■	■	■	■
<b>User Defined Reports</b>				
Activity report	■	■	■	■
Vehicle stop report	■	■	■	■
Vehicle trip and geofence stop summary report	■	■	■	■
State mileage report	■	■	■	■
Fuel economy report		■	■	■
Vehicle PM report		■	■	■
<b>Performance Reporting</b>				
Trip—miles/kilometers per gallon/liter		■	■	■
Trip—fuel(gallons used)		■	■	■
Idle time—total hours and percentage		■	■	■
Time spent in 4 speed bands (plus %)		■	■	■
Time spent in 3 RPM bands (plus %)		■	■	■
Time spent in cruise (plus %)		■	■	■
Hard braking—elapsed time		■	■	■
On-command connection		■	■	■
<b>Geofencing</b>				
Polygon or circle/adjustable radius	■	■	■	■
<b>Alerts</b>				
Arrival	■	■	■	■
Departure	■	■	■	■
Detainment	■	■	■	■
Active fault code		■	■	■
Battery (disconnected device)	■	■	■	■

Installation not included. Includes 5-year warranty.  
\*Additional fees may apply.

